

A.
System
Overview

B1.
Cable Ties

B2.
Cable
Accessories

B3.
Stainless
Steel Ties

C1.
Wiring
Duct

C2.
Surface
Raceway

C3.
Abrasion
Protection

C4.
Cable
Management

D1.
Terminals

D2.
Power
Connectors

D3.
Grounding
Connectors

E1.
Labeling
Systems

E2.
Labels

E3.
Pre-Printed
& Write-On
Markers

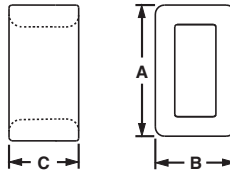
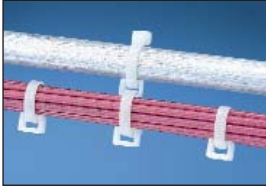
E4.
Permanent
Identification

E5.
Lockout/
Tagout
& Safety
Solutions

F.
Index

Closed Connector Rings

- Connect multiple cable bundles

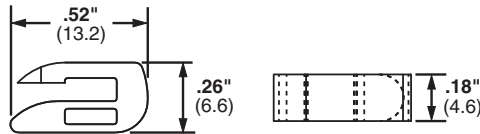


| Part Number | Used with Cable Ties‡ | Length A | | Width B | | Height C | | Material | Color | Environment | Mounting Method | Std. Pkg. Qty. | Std. Ctn. Qty. |
|-------------|-----------------------|----------|------|---------|-----|----------|-----|-----------------------------|---------|------------------|-----------------|----------------|----------------|
| | | In. | mm | In. | mm | In. | mm | | | | | | |
| CR2-M | M, I, S | 0.33 | 8.4 | 0.20 | 5.1 | 0.20 | 5.0 | Nylon 6.6 | Natural | Indoors | Cable Ties | 1000 | 10000 |
| CR4H-M | M, I, S, HS, LH | 0.57 | 14.5 | 0.36 | 9.1 | 0.30 | 7.6 | | | Indoors | | | |
| CR4H-M0 | M, I, S, HS, LH | 0.57 | 14.5 | 0.36 | 9.1 | 0.30 | 7.6 | Weather Resistant Nylon 6.6 | Black | Indoors/Outdoors | | | |

‡Cable tie cross section sizes: M = Miniature, I = Intermediate, S = Standard, HS = Heavy-Standard and LH = Light-Heavy.

Open Connector Ring

- Designed to add on cable bundles without removing cable ties

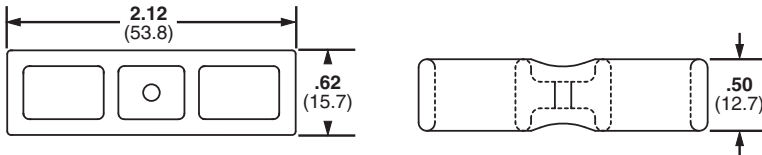


| Part Number | Used With Cable Ties‡ | Material | Color | Environment | Mounting Method | Std. Pkg. Qty. | Std. Ctn. Qty. |
|-------------|-----------------------|-----------|---------|-------------|-----------------|----------------|----------------|
| CROS-M | M, I, S | Nylon 6.6 | Natural | Indoors | Cable Ties | 1000 | 5000 |

‡Cable tie cross section sizes: M = Miniature, I = Intermediate, and S = Standard.

Cable Spacers

- Used to separate and/or hang cords, cables, and tubing



| Part Number | Used with Cable Ties‡ | Material | Color | Environment | Mounting Method | Std. Pkg. Qty. | Std. Ctn. Qty. |
|-------------|-----------------------|-----------------------------|-------|------------------|-----------------|----------------|----------------|
| CSH-D20 | M, I, S, HS, LH, H | Nylon 6.6 | Black | Indoors | Cable Ties | 500 | 2500 |
| CSH-D0 | M, I, S, HS, LH, H | Weather Resistant Nylon 6.6 | Black | Indoors/Outdoors | Cable Ties | 500 | 2500 |

‡Cable tie cross section sizes: M = Miniature, I = Intermediate, S = Standard, HS = Heavy-Standard, LH = Light-Heavy and H = Heavy.

Mouser Electronics

Authorized Distributor

Click to View Pricing, Inventory, Delivery & Lifecycle Information:

Panduit:

[CROS-M](#) [CR2-M](#) [CR4H-M](#) [CR4H-M0](#) [CSH-D20](#)